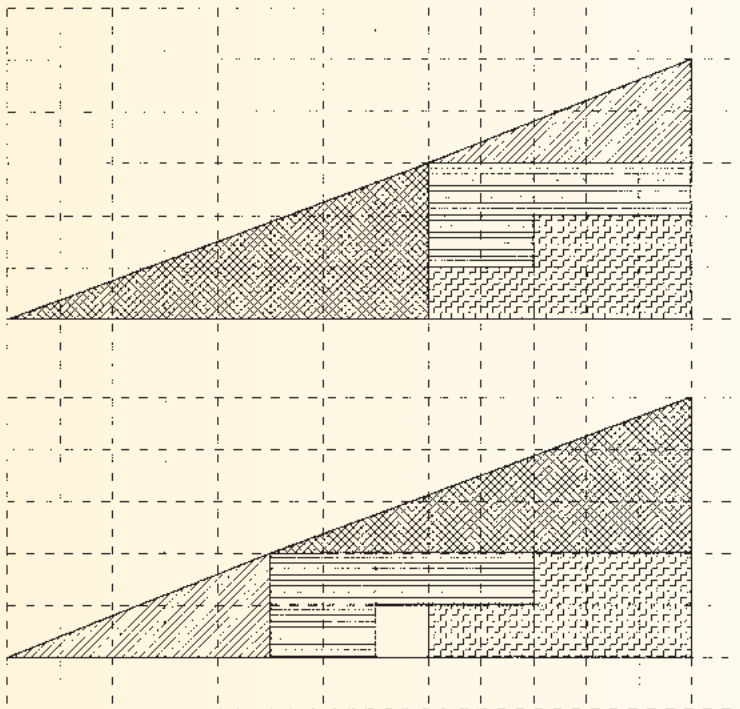
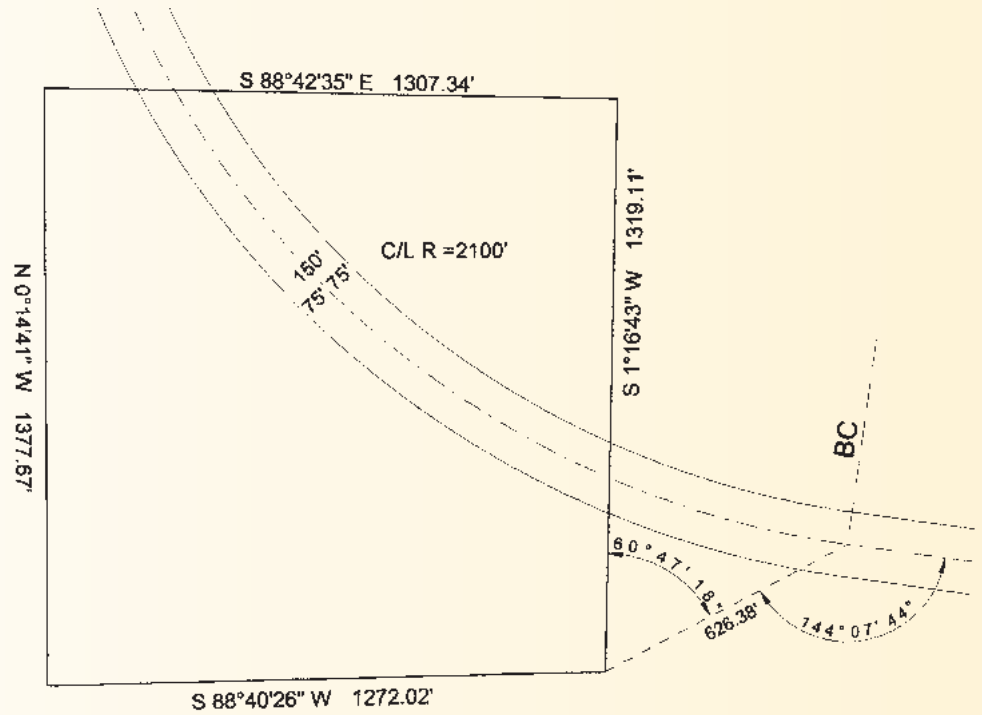




# PROBLEMCORNER

## Problem 105

A strip of land is to be purchased for a 150-foot wide highway right-of-way. Calculate how much area is being taken without using coordinates.



## Problem 106

Where did the extra square unit come from?

Solutions can be found on our website at [www.profsurv.com](http://www.profsurv.com)

The problems for this column are contributed by retired California surveyor Dave Lindell, LS.