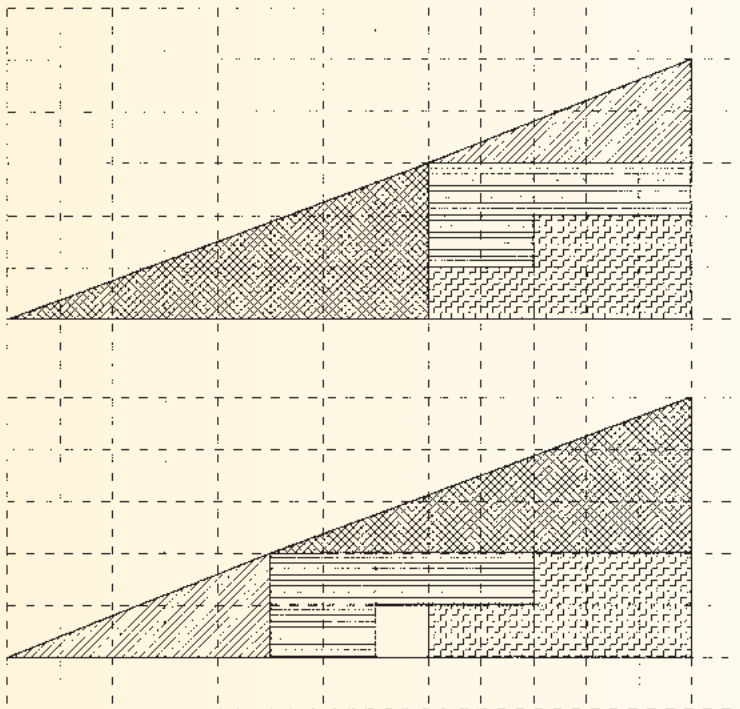
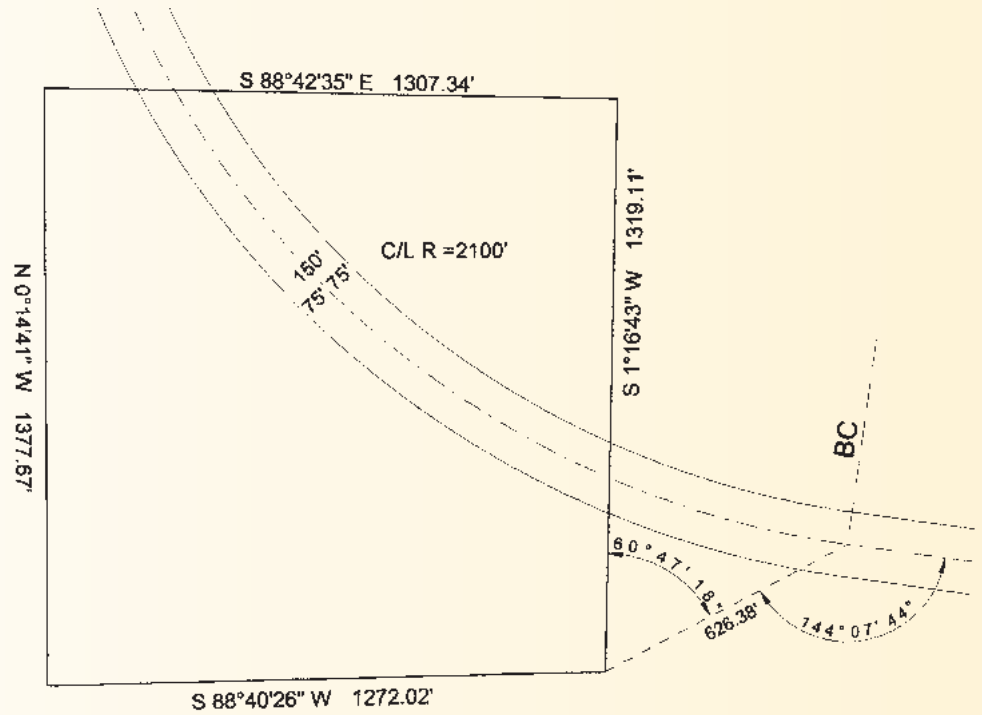




PROBLEMCORNER

Problem 105

A strip of land is to be purchased for a 150-foot wide highway right-of-way. Calculate how much area is being taken without using coordinates.



Problem 106

Where did the extra square unit come from?

Solutions can be found on our website at www.profsurv.com

The problems for this column are contributed by retired California surveyor Dave Lindell, LS.