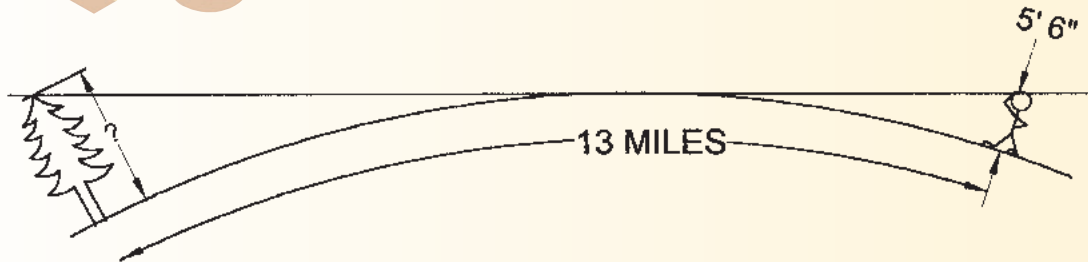


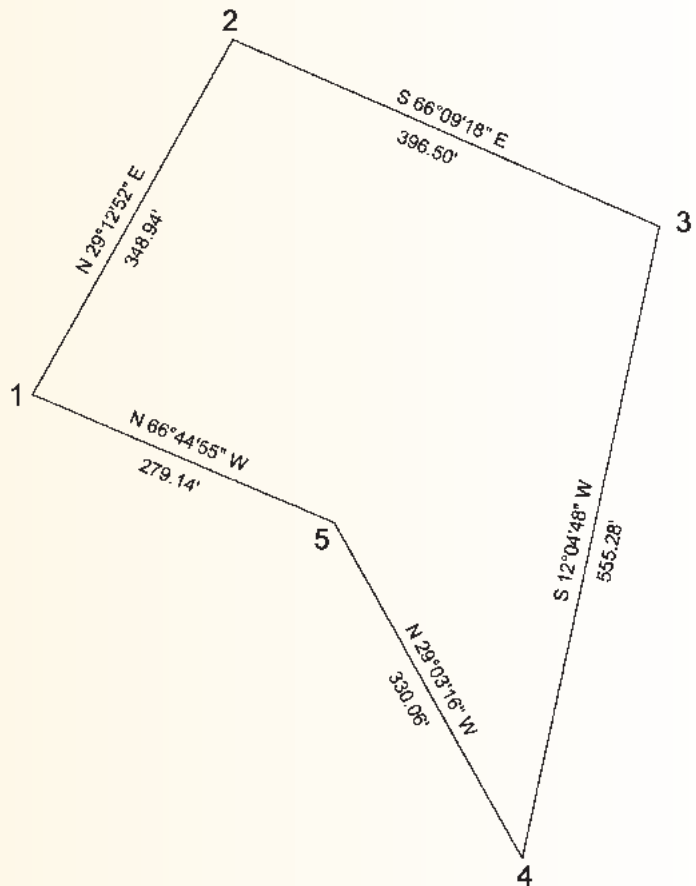
# Problem 91

**W**hat is the shortest tree that can be seen across a 13-mile wide lake by someone whose eye is 5'6" above the shoreline?



# Problem 92

**G**iven the following traverse, derive a method of determining an area using coordinates only. (Let Point 1 be N 564.653, E 119.117.)



Solutions can be found on our website at [www.profsurv.com](http://www.profsurv.com)

The problems for this column are contributed by retired California surveyor Dave Lindell, LS.