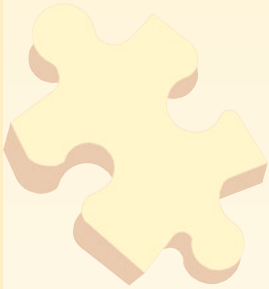
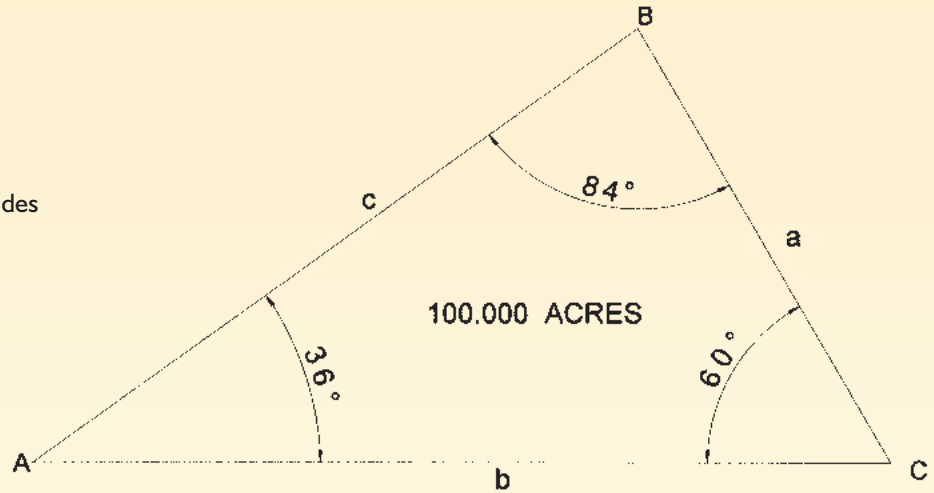




This month's challenges require you to find the sides of a triangle and divide the triangle into three equal parts.

Problem 49

Find the lengths of a , b , and c , the sides of triangle ABC .



Problem 50

Find point "P" within the triangle ABC from Problem 49 so that lines perpendicular to the sides that intersect at point "P" divide the triangle into three equal areas of $33\frac{1}{3}$ acres each.

