

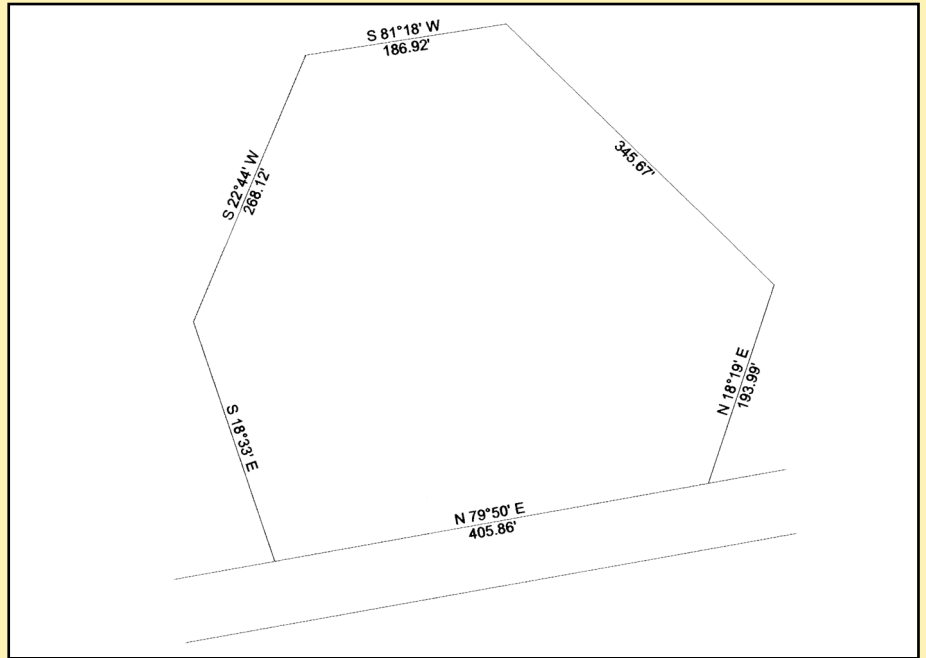


THE PROBLEM CORNER

This month's challenges involve dividing a parcel to obtain equal frontages and equal areas, and determining the length of a line.

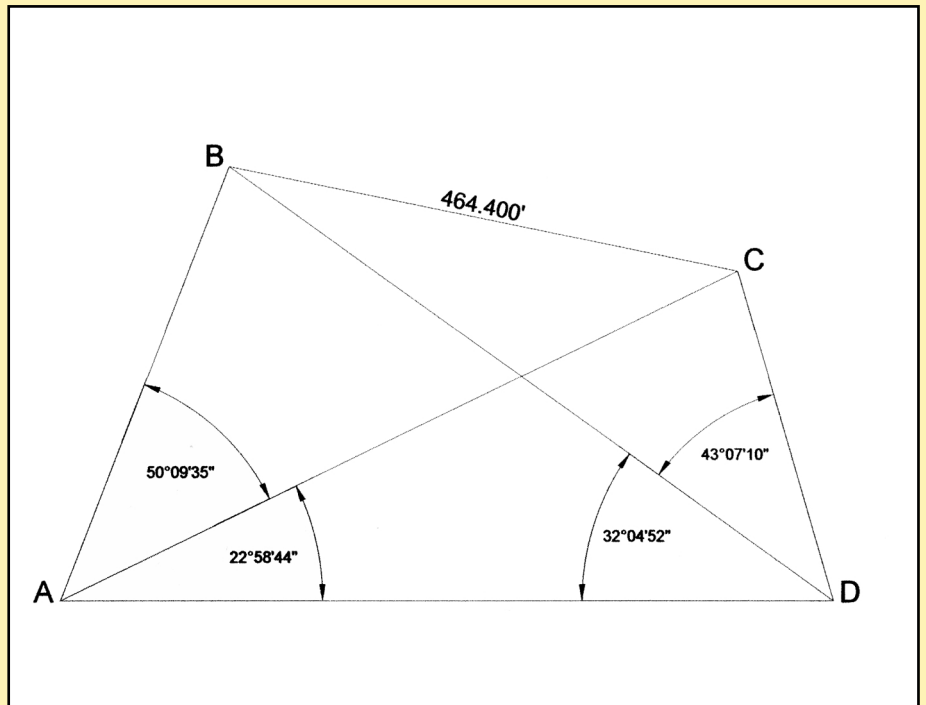
Problem Number 19

Divide the parcel into two equal areas with equal frontage along the road.



Problem Number 20

Given the length of $BC = 464.400'$ and the four measured angles as shown, what is the length of AD ?



The problems for this column are contributed by retired California surveyor Dave Lindell, LS.

Note: For those of you who don't want to wait until next month's issue to find the answers, solutions are now posted on our Website. Visit www.profsurv.com and click on Problem Corner. Good luck!