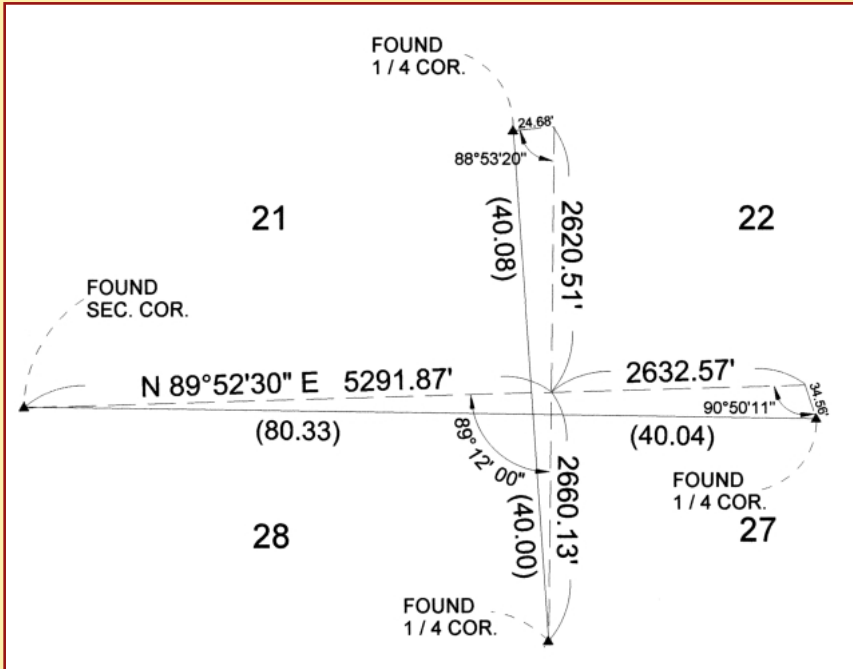


## THE PROBLEM CORNER

This month's trigonometry challenges involve establishing a PLSS corner and finding a curve radius. The solutions to Problems 13 and 14, which appeared in the February issue, follow on page 51.

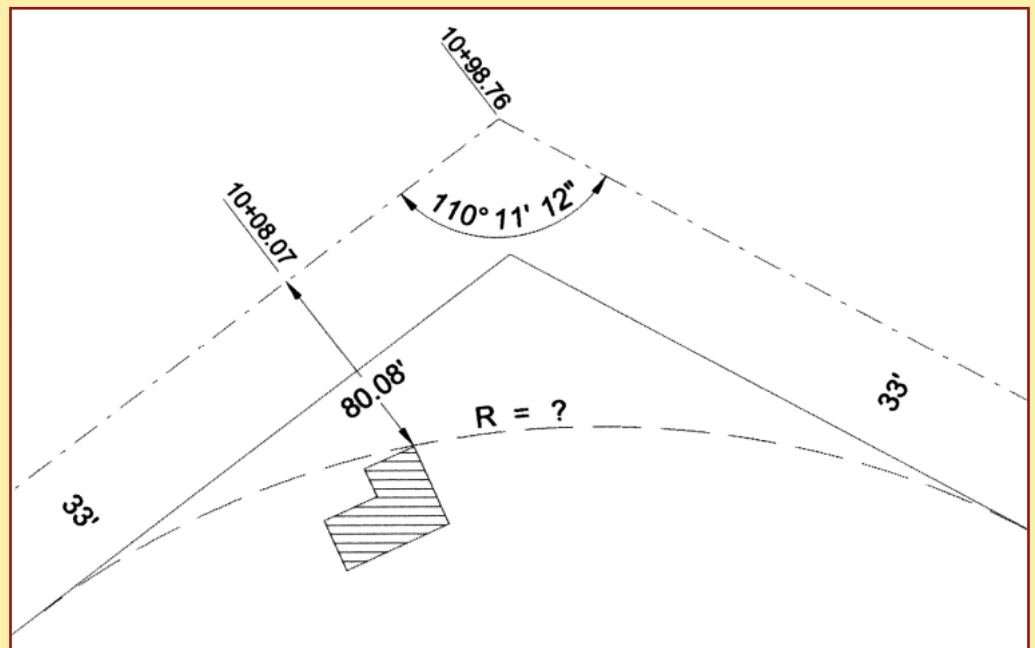


### Problem Number 15

Given the record data in parentheses and the measured data shown, where would you establish the southeast corner of section 21?

### Problem Number 16

What is the longest radius curve that will be tangent to the street sidelines and pass through the corner of the house?



The problems for this column are contributed by retired California surveyor Dave Lindell, LS.

Note: Due to overwhelming response from our readers, there's good news for those of you who don't want to wait until next month's issue to find the answers. Solutions are now posted on our Website. Visit [www.profsurv.com](http://www.profsurv.com) and click on Problem Corner. Good luck!